

Activity ID	Activity Name	Original Duration	Remaining Duration	Start	Finish	Total Float	2011			
							Sep	Oct	Nov	Dec
Reclamation in NPR3 ver.9.5 2011_11_21		115	23	21-Jul-11 A	19-Dec-11	-39				
Landside		115	23	05-Aug-11 A	19-Dec-11	-39				
	Installation Seawall Blocks to B6 and B7	55	0	13-Aug-11 A	18-Oct-11 A					
	Construct the Concrete Coping at B6 and B7	82	0	13-Aug-11 A	07-Nov-11 A					
	Laying Geotextile & Filter Material	86	0	05-Aug-11 A	14-Nov-11 A					
	Construct Open Channel U under IEC	33	0	23-Sep-11 A	30-Oct-11 A					
	Construct Open Channel U outside IEC	32	20	30-Sep-11 A	15-Dec-11	-36				
	Construct the Drainage Pipeline at West of Open Channel U	34	0	30-Sep-11 A	31-Oct-11 A					
	Construct the Drainage Pipeline at East of Open Channel U	28	17	01-Nov-11 A	15-Dec-11	-31				
	Unloading Sorted Public Fill behind new seawall	53	0	15-Aug-11 A	20-Nov-11 A					
	Reclamation	98	23	13-Aug-11 A	19-Dec-11	-39				
Seaside		100	23	21-Jul-11 A	19-Dec-11	-39				
	Construction of Outlet Pipe from City Garden	54	20	12-Oct-11 A	19-Dec-11	-34				
	Construction of B8	13	13	15-Nov-11 A	09-Dec-11	-31				

█ Actual Work
 █ Critical Remaining Work
 ▼ Summary
█ Remaining Work
 ◆ Milestone

Contract No. HK/2009/01

Contract Title : Wan Chai Development Phase II - Central - Wan Chai Bypass at HKCEC

Working Programme for Marine Works (Dredging and Backfilling)

ACTIVITY	START	FINISH	2010												2011												2012												2013																																								
			Feb	Mar	Apr	May	Jun	Jul	Aug	Sep	Oct	Nov	Dec	Jan	Feb	Mar	Apr	May	Jun	Jul	Aug	Sep	Oct	Nov	Dec	Jan	Feb	Mar	Apr	May	Jun	Jul	Aug	Sep	Oct	Nov	Dec	Jan	Feb	Mar	Apr	May	Jun	Jul	Aug	Sep	Oct	Nov	Dec																														
Submissions before Works Commencement																																																																															
Submit silt curtain deployment plan	31/3/10	31/3/10	◆																																																																												
Submit silt screen deployment plan	31/3/10	31/3/10	◆																																																																												
Submit measures to mitigate noise impact	31/3/10	31/3/10	◆																																																																												
Cross Harbour Watermains from WCN to TST (DP6)																																																																															
Trench dredging for marine watermains installation	29/4/10	28/10/10				■																																																																									
Backfilling for watermain	28/1/11	14/12/11													■																																																																
Reclamation Works at HKCEC Water Channel (DP3)																																																																															
Dredging at HKCEC Water Channel (Western Part)	1/6/10	1/8/10				■																																																																									
Backfilling to +3.5mPD (Western Part)	17/8/10	6/2/11							■																																																																						
Dredging at HKCEC Water Channel (Middle Part)	2/8/10	6/1/11							■																																																																						
Backfilling to +3.5mPD (Middle Part)	21/2/11	1/6/11													■																																																																
Dredging at HKCEC Water Channel (Eastern Part)	1/12/12	31/12/12																												■																																																	
Backfilling to +3.5mPD (Eastern Part)	16/1/13	30/4/13																																					■																																								

**Dredging & Reclamation Works Programme Summary
(based on Initial Works Programme Rev. 0)**

ID	Task Name	Duration	Start	Timeline																
				2010	2011	2012	2013	2014	2015											
				Q4	Q1	Q2	Q3	Q4	Q1	Q2	Q3	Q4	Q1	Q2	Q3	Q4	Q1	Q2	Q3	Q4
1	HK/2009/02-Marine & Reclamation Works	2008 d	Thu 28/1/10	[Summary bar from Q4 2009 to Q4 2015]																
2	Contract Commencement	0 d	Thu 28/1/10	[Milestone diamond at start of timeline]																
3	General	1879 d	Mon 22/2/10	[Summary bar from Q1 2010 to Q4 2015]																
4	Submission & obtain approval for marine GI	21 d	Mon 22/2/10	[Task bar in Q1 2010]																
5	Stage 1 Marine GI for reclamation	30 d	Mon 15/3/10	[Task bar in Q1 2010]																
6	Engineer's Design review for Dredging of WCR1, WCR2 & WCR4	30 d	Mon 22/3/10	[Task bar in Q1 2010]																
7	Relocation of New Star Ferry Pier	0 d	Tue 18/3/14	[Milestone diamond in Q3 2014]																
8	Demolition of Existing Star Ferry Pier	100 d	Tue 18/3/14	[Task bar in Q3 2014]																
9	Stage 2 Marine GI for Reclamation	14 d	Tue 18/3/14	[Task bar in Q3 2014]																
10	Engineer's Design review for Dredging of WCR3	21 d	Tue 25/3/14	[Task bar in Q3 2014]																
11	Complete Diversion of Hung Hing Road Traffic Back to Original	20 d	Fri 6/2/15	[Task bar in Q1 2015]																
12	Excavate & remove top of d-wall for permanent seawall construction	50 d	Wed 25/2/15	[Task bar in Q1 2015]																
13	Submarine Outfall	500 d	Tue 21/9/10	[Summary bar from Q3 2010 to Q4 2011]																
14	Dredging, Laying and Backfilling of Submarine Outfall Pipe at Sea	500 d	Tue 21/9/10	[Task bar from Q3 2010 to Q4 2011]																
15	Phase 1 - WCR1	158 d	Wed 21/4/10	[Summary bar from Q1 2010 to Q4 2010]																
16	Mobilization of plants	1 d	Wed 21/4/10	[Task bar in Q1 2010]																
17	Seabed dredging	63 d	Wed 21/4/10	[Task bar in Q1 2010]																
18	Bedding Filling and Permanent seawall (precast cassion)	60 d	Tue 22/6/10	[Task bar in Q2 2010]																
19	Bulk reclamation	37 d	Fri 20/8/10	[Task bar in Q2 2010]																
20	Phase 2 - WCR2	149 d	Thu 1/3/12	[Summary bar from Q3 2011 to Q4 2012]																
21	Mobilization of plants	1 d	Thu 1/3/12	[Task bar in Q3 2011]																
22	Temp seawall and Seabed dredging	77 d	Thu 1/3/12	[Task bar in Q3 2011]																
23	Bulk reclamation	73 d	Wed 16/5/12	[Task bar in Q4 2011]																
24	Phase 3 - TWCR4 & WCR4	98 d	Sat 28/4/12	[Summary bar from Q4 2011 to Q4 2012]																
25	Mobilization of plants	1 d	Sat 28/4/12	[Task bar in Q4 2011]																
26	Temp Seawall and Seabed dredging	75 d	Sat 28/4/12	[Task bar in Q4 2011]																
27	Bulk & temp reclamation	24 d	Wed 11/7/12	[Task bar in Q3 2012]																
28	Phase 4 - WCR3	294 d	Tue 18/3/14	[Summary bar from Q3 2013 to Q4 2014]																
29	Mobilization of plants	1 d	Tue 18/3/14	[Task bar in Q3 2013]																
30	Seabed dredging for Permanent Seawall	112 d	Tue 18/3/14	[Task bar in Q3 2013]																
31	Backfill and permanent seawall (precast cassion)	108 d	Tue 8/7/14	[Task bar in Q4 2013]																
32	Bulk reclamation	74 d	Fri 24/10/14	[Task bar in Q4 2013]																
33	Phase 5 - Construct Permanent Seawall Blocks along curved coastline & Remove TWCR4	105 d	Wed 15/4/15	[Summary bar from Q4 2014 to Q4 2015]																
34	Mobilization of plants	1 d	Wed 15/4/15	[Task bar in Q4 2014]																
35	Dredging and Filling for permanent seawall construction	50 d	Wed 15/4/15	[Task bar in Q4 2014]																
36	Construction of Permanent Seawall Blocks for curved coastline	56 d	Wed 3/6/15	[Task bar in Q1 2015]																
37	Remove temp seawall and reinstate the location of TWCR4	30 d	Mon 29/6/15	[Task bar in Q1 2015]																

Project: Reclamation Works Programme
Date: Tue 9/3/10

Task		Summary		Rolled Up Progress		Project Summary	
Progress		Rolled Up Task		Split		Group By Summary	
Milestone		Rolled Up Milestone		External Tasks		Deadline	

Activity ID	Cal ID	Activity Description	Orig Dur	Early Start	Early Finish	Year																
						2010	2011	2012	2013	2014	2015	2016	2017									
TCBR1E (TS1 Area)																						
105	1	TCBR1E(TS1)-dredging+rockfill(pre. for seawall)	86	03DEC10*	26FEB11																	
110	1	TCBR1E (TS1)-temporary reclamation	69	28JAN11*	06APR11																	
155	1	TCBR1E (TS1)- removal of temporary reclamation	27	30JAN12*	25FEB12																	
TCBR4																						
100	1	Maintenance dredging for navigation safety for	7	20NOV10*	26NOV10																	
TCBR2 + TCBR3 (TS2 Area)																						
115	1	TCBR2&TCBR3(TS2)- Maintenance dredging for	5	15NOV10*	19NOV10																	
117	1	TCBR2&TCBR3(TS2)-dredge+rockfill seabed	64	16DEC11*	17FEB12																	
120	1	TCBR2&TCBR3(TS2) --temporary reclamation	115	26FEB12*	19JUN12																	
160	1	TCBR2&TCBR3(TS2-removal temporary reclamation	57	18AUG13*	13OCT13																	
TCBR1W (TS4 Area)																						
125	1	TCBR1W(TS4)-dredging+rockfill(pre. for seawall)	40	19DEC10*	27JAN11																	
130	1	TCBR1W(TS4) --temporary reclamation	68	28JAN11	05APR11																	
165	1	TCBR1W(TS4)--removal temporary reclamation	26	27OCT13*	21NOV13																	
TPCWAE																						
135	1	TPCWAE-dredging+rockfill(pre. for seawall)	55	03DEC10*	26JAN11																	
140	1	TPCWAE --temporary reclamation	77	27JAN11	13APR11																	
170	1	TPCWAE--removal temporary reclamation	28	28SEP13*	25OCT13																	
TPCWAW																						
145	1	TPCWAW-dredging+rockfill(pre. for seawall)	47	28OCT13*	13DEC13																	
150	1	TPCWAW --temporary reclamation	83	14DEC13	06MAR14																	
175	1	TPCWAW--removal temporary reclamation	50	02JUL15*	20AUG15																	

 Early Bar
 Progress Bar
 Critical Activity

?Primavera Systems, Inc.

EP02 CHINA STATE CONSTRUCTION ENGG LTD Sheet 1 of 1

CONTRACT NO. HY/2009/15: CENTRAL WAN CHAI BYPASS- TUNNEL (CBTS SECTION)

Prepared based on IWP Rev. 0
Date Prepared: 28 Oct 2010

Act ID	Description	Orig Dur	Early Start	Early Finish	2011												2012												2013					
					JAN	FEB	MAR	APR	MAY	JUN	JUL	AUG	SEP	OCT	NOV	DEC	JAN	FEB	MAR	APR	MAY	JUN	JUL	AUG	SEP	OCT	NOV	DEC	JAN	FEB	MAR			
Section I																																		
Contract Obligation																																		
1000	Commencement of Section I of works	0	20JAN11 *		◆ Commencement of Section I of works																													
Initial Works																																		
1050	Apply Marine notice to Marine Department	30	21JAN11	19FEB11	■ Apply Marine notice to Marine Department (dredg)																													
1060	Apply Marine notice to Marine Dept. Piling	30	18FEB11	19MAR11	■ Apply Marine notice to Marine Dept. Piling																													
1080	Apply FEP under EP356/2009	21	28FEB11	20MAR11	■ Apply FEP under EP356/2009																													
1081	Submission of Works Schedule for FEP	14	05MAR11	21MAR11	■ Submission of Works Schedule for FEP																													
1082	Submission of Location Plan for FEP	14	05MAR11	21MAR11	■ Submission of Location Plan for FEP																													
1083	Submission of Silt Curtain Deployment	14	05MAR11	21MAR11	■ Submission of Silt Curtain Deployment Plan																													
1084	Submission of Silt Screen Deployment Plan	14	05MAR11	21MAR11	■ Submission of Silt Screen Deployment Plan																													
1085	Submission Noise Management Plan	14	05MAR11	21MAR11	■ Submission Noise Management Plan																													
1090	Apply Dumping Permit	30	18FEB11	19MAR11	■ Apply Dumping Permit																													
1100	Apply CNP	30	31JAN11	01MAR11	■ Apply CNP																													
1110	Apply C&D waste disposal	30	20JAN11	18FEB11	■ Apply C&D waste disposal																													
1120	Apply Discharge licence	30	18FEB11	19MAR11	■ Apply Discharge licence																													
1130	Notification of chemical waste Producer	30	20JAN11	18FEB11	■ Notification of chemical waste Producer																													
1140	Notification to Labor Dept-Works Commencement	30	20JAN11	18FEB11	■ Notification to Labor Dept-Works Commencement																													
1150	Submit Risk Ass to MTR	21	28FEB11	20MAR11	■ Submit Risk Ass to MTR																													
1260	Erect Hoarding	30	28FEB11	29MAR11	■ Erect Hoarding																													
1270	Demarcation of Marine Site Boundary	21	01MAR11	21MAR11	■ Demarcation of Marine Site Boundary																													
1280	Working Site Office establishment	14	27JAN11	09FEB11	■ Working Site Office establishment																													
Monitoring																																		
1160	Takeover monitoring system from C1	0	21MAR11 *		◆ Takeover monitoring system from C1																													
1180	Commence Monitoring- ADMS,etc	0	21MAR11		◆ Commence Monitoring- ADMS,etc																													
Dredging Works																																		
1070	Submit Dredging MS	30	18FEB11	19MAR11	■ Submit Dredging MS																													
1075	Acceptance of Dredging MS	0		19MAR11	◆ Acceptance of Dredging MS																													
1078	Initial Hydrographic Survey	1	20MAR11	20MAR11	■ Initial Hydrographic Survey																													
1200	Initial Dredging Works for Piling	15	22MAR11	05APR11	■ Initial Dredging Works for Piling																													
1210	Final Hydrographic survey	3	07MAY12	09MAY12	■ Final Hydrographic survey																													
1220	Final Dredging Works	7	10MAY12	16MAY12	■ Final Dredging Works																													
1230	Confirmation Hydrographic survey	70	17MAY12	25JUL12	■ Confirmation Hydrographic survey																													
Piling Works																																		
1240	Submit stage platform MS	30	10FEB11	11MAR11	■ Submit stage platform MS																													
1250	Submit piling MS	30	10FEB11	11MAR11	■ Submit piling MS																													
P1000	Erect temporary Piling Platform	120	06APR11	03AUG11	■ Erect temporary Piling Platform																													
P1020	Pre-drilling	150	06JUN11	02NOV11	■ Pre-drilling																													
P1040	Bored Piles Construction and Testing	250	06JUL11	11MAR12	■ Bored Piles Construction and Testing																													
P1060	Drive Sheet piles along Bored piles	140	03NOV11	21MAR12	■ Drive Sheet piles along Bored piles																													
P1080	Dismantle Temporary Piling Platform	50	25FEB12	14APR12	■ Dismantle Temporary Piling Platform																													
P1100	Dive sheet piles beyond precast seawall	90	17JAN12	15APR12	■ Dive sheet piles beyond precast seawall																													
P1120	Trim pilehead to cut-off level	210	29SEP11	25APR12	■ Trim pilehead to cut-off level																													
P1140	Cut steel casing of bore piles	210	06OCT11	02MAY12	■ Cut steel casing of bore piles																													
P1160	Cut sheet piles to design level for box units	120	08JAN12	06MAY12	■ Cut sheet piles to design level for box units																													

Start date 20JAN11
 Finish date 19DEC12
 Data date 20JAN11
 Run date 05MAR11
 Page number 1A
 © Primavera Systems, Inc.

Contract no. HK/2010/06
 Wan Chai Development Phase II- Central-Wan Chai By pass over MTR Tsuen Wan Line

GAMMON-LEADER JV

Works Schedule of Marine Works for EP-356/2009

- Early bar
- Progress bar
- Critical bar
- Summary bar
- ◆ Start milestone point
- ◆ Finish milestone point

Activity ID	Activity Name	Rem Dur	Start	Finish	2012																		
					January					February				March				April					
					26	02	09	16	23	30	06	13	20	27	05	12	19	26	02	09	16		
3MRP - Jan 2012 to Apr 2012																							
01 - CONTRACT DATES																							
01.1 - Conditions																							
0110-1100	PMI for Section 1 of the Works	0		21-Jan-12																			
01.2 - Possession of Site																							
0120-2000	Possession to Portion X	0	21-Jan-12*																				
0120-2100	Possession to Portion III (Partial Possession)	0	31-Dec-11 A																				
0120-2200	Possession to Portion VA (Partial Possession)	0	31-Dec-11 A																				
0120-2300	Possession to Portion VB (Partial Possession)	0	31-Dec-11 A																				
0120-2400	Possession to Portion VC (Partial Possession)	0	31-Dec-11 A																				
0120-2500	Possession to Portion VD (Partial Possession)	0	31-Dec-11 A																				
01.5 - Period of Site Possession for each Portion																							
0150-1000	Site possession Period Portion VI	2070	20-Jan-11 A	20-Sep-17																			
0150-1100	Site Possession Period Portion VIIA	2070	04-Aug-11 A	20-Sep-17																			
0150-1200	Site Possession Period Portion VIIB	862	04-Aug-11 A	31-May-14																			
0150-1300	Site Possession Period Portion VIIC	1208	04-Aug-11 A	12-May-15																			
0150-1400	Site Possession Period Portion VIID	862	04-Aug-11 A	31-May-14																			
0150-1500	Site Possession Period Portion XI	622	05-Oct-11 A	04-Oct-13																			
0150-2000	Site Possession Period Portion X	2070	21-Jan-12	20-Sep-17																			
0150-2500	Site Possession Period Portion VD	1293	31-Dec-11 A	05-Aug-15																			
02 - PRE-CONSTRUCTION WORKS																							
02.2 - Contractor's Submission																							
0220-1200	Temp. Drainage Management Plan - Approval from ER	7	10-Sep-11 A	27-Jan-12																			
0220-1250	Concrete Ready Mix/Design Mix - Concrete Plant Trials & Approval	8	04-Aug-11 A	28-Jan-12																			
0220-1260	Drainage Pipes & Materials - Submission	14	15-Sep-11 A	03-Feb-12																			
0220-1270	Drainage Pipes & Materials - ER Review/Comment	14	04-Feb-12	17-Feb-12																			
0220-1280	Drainage Pipes & Materials - Resubmission	7	18-Feb-12	24-Feb-12																			
0220-1290	Drainage Pipes & Materials - ER Approval	14	25-Feb-12	09-Mar-12																			
0220-1300	Drainage Pipes & Materials - Procurement & Delivery	14	03-Mar-12	16-Mar-12																			
0220-1360	Tunnel Structures Materials - Submission	28	15-Mar-12	11-Apr-12																			
0220-1370	Tunnel Structures Materials - ER Review/Comment	28	12-Apr-12	09-May-12																			
0220-1460	Bridge Bearing - Submission	15	10-Oct-11 A	04-Feb-12																			
0220-1470	Bridge Bearing - ER Review/Comment	28	05-Feb-12	03-Mar-12																			
0220-1480	Bridge Bearing - Resubmission	14	04-Mar-12	17-Mar-12																			
0220-1490	Bridge Bearing - ER Approval	28	18-Mar-12	14-Apr-12																			
02.3 - Method Statement / Shop Drawings																							
0230-1131	MS Marine Piling - Submission (low headroom)	28	13-Feb-12	11-Mar-12																			
0230-1132	MS Marine Piling - ER Review & Comment (low headroom)	28	12-Mar-12	08-Apr-12																			
0230-1133	MS Marine Piling - Resubmission (low headroom)	28	09-Apr-12	06-May-12																			
0230-1260	MS Cut & Cover Tunnel - Submission	28	21-Jan-12	17-Feb-12																			
0230-1270	MS Cut & Cover Tunnel - ER Review & Comment	28	18-Feb-12	16-Mar-12																			
0230-1280	MS Cut & Cover Tunnel - Resubmission	28	17-Mar-12	13-Apr-12																			
0230-1340	MS Pre-cast Segment Bridge - Submission	28	01-Apr-12	28-Apr-12																			
0230-1460	MS Stressing/Restressing Tendons - Submission	28	01-Mar-12	28-Mar-12																			

Remaining Level of Effort
 Actual Level of Effort
 Actual Work
 Remaining Work
 Critical Remaining Work
 Milestone

Contract HY/2009/19
Three Month Rolling Programme (21 JAN 2012 - 20 APR 2012)

3MRP
 3MRP - Jan 2012 to Apr 2012
 Page 1 of 7

Activity ID	Activity Name	Rem Dur	Start	Finish	2012																		
					January				February				March				April						
					26	02	09	16	23	30	06	13	20	27	05	12	19	26	02	09			
0230-1470	MS Stressing/Destressing Tendons - ER Review & Comment	28	29-Mar-12	25-Apr-12																			
0230-1540	MS Precasting of Bridge Segment & Beam - Submission	30	14-Dec-11 A	19-Feb-12																			
0230-1550	MS Precasting of Bridge Segment & Beam - ER Review & Comment	28	20-Feb-12	18-Mar-12																			
0230-1560	MS Precasting of Bridge Segment & Beam - Resubmission	36	19-Mar-12	23-Apr-12																			
02.4 - Contractor's Design and Build Items																							
0240-1010	Temp Bridge "TA" Design - Prep & Submit	102	16-Dec-11 A	01-May-12																			
0240-1090	Int. Noise Enclosure Design - Public Consultation	126	29-Jul-11 A	25-May-12																			
0240-1095	Int. Noise Enclosure Design - ACABAS/ER Consultation/Submission	81	16-Dec-11 A	10-Apr-12																			
0240-1100	Int. Noise Enclosure Design - ER review & comment	28	11-Apr-12	08-May-12																			
0240-1120	Noise Barrier Design - Public Consultation	126	29-Jul-11 A	25-May-12																			
0240-1122	Noise Barrier Design - ACABAS/ER Consultation/Submission	81	16-Dec-11 A	10-Apr-12																			
0240-1124	Noise Barrier Design - ER review & comment	28	11-Apr-12	08-May-12																			
0240-1130	Perm. Noise Enclosure Design - Public Consultation	180	14-Feb-12	11-Aug-12																			
0240-1371	Marine Bored Piling Platform Design (F9 to F14) - Submission	0	07-Nov-11 A	27-Dec-11 A																			
0240-1372	Marine Bored Piling Platform Design (F9 to F14) - ER Review/Comment	0	28-Dec-11 A	10-Jan-12 A																			
0240-1373	Marine Bored Piling Platform Design (F9 to F14) - Resubmission	3	11-Jan-12 A	23-Jan-12																			
0240-1374	Marine Bored Piling Platform Design (F9 to F14) - ER Approval	14	23-Jan-12	06-Feb-12																			
02.5 - Bridge Segment/Beam Off-site Precasting																							
0250-1000	Propose, approve and set-up Factory for Pre-cast Unit	114	14-Dec-11 A	13-May-12																			
0250-1100	Geometric Design of the Bridge Segments/Beams	44	14-Dec-11 A	04-Mar-12																			
0250-1200	Bridge Segment/Beam Mould Preparation	24	05-Mar-12	28-Mar-12																			
0250-1300	Trial Casting for Bridge Segment/Beam	18	29-Mar-12	15-Apr-12																			
03 - PRELIMINARY WORKS																							
03.1 - Site Establishment																							
0310-1290	Fabrication of Special Hoarding	19	24-Oct-11 A	15-Feb-12																			
0310-1300	Hoarding at Portion VA & VB	40	15-Feb-12	02-Apr-12																			
0310-1400	Move in Surcharge to Portion III & VD	6	02-Apr-12	12-Apr-12																			
0310-1500	Surcharge kept on Site	90	12-Apr-12	11-Jul-12																			
03.2 - Geotechnical Instrumentation and Monitoring Works																							
0320-1050	Geotechnical Instrumentation Portion IB, ID	0	14-Nov-11 A	20-Jan-12 A																			
0320-1100	Geotechnical Instrumentation Portion X	60	21-Jan-12	03-Apr-12																			
03.3 - Interface Works																							
0330-1100	Works at FEHD Permanent Depot (Stage 1)	36	21-Jan-12	06-Mar-12																			
0330-1110	Submit to FEHD/ER Relocation Sequence & Programme	6	21-Jan-12	31-Jan-12																			
0330-1120	Relocate FEHD to Permanent Depot at Portions IA & X	12	07-Mar-12	20-Mar-12																			
04 - SECTION 1 OF THE WORKS (Subject to Excision)																							
04.1 - Drainage & Sewerage																							
0410-0980	Ground investigation + CAR & RAP approval	2	19-Jul-11 A	27-Jan-12																			
0410-0990	Engineer Instruction to excision of the works	0		27-Jan-12																			
0410-1010	Confirmatory Investigation/Sample/Tests/Decontamination	60	27-Jan-12	10-Apr-12																			
0410-1020	Utility Coordination and Liaison	48	27-Jan-12	23-Mar-12																			
0410-1030	Setting Out and Utility Detection & Protection at Portion XI	18	10-Apr-12	02-May-12																			
05 - SECTION 2 & 2A OF THE WORKS																							
05.2 - Cut & Cover Tunnel Ch 4932-5149																							

Remaining Level of Effort

 Actual Level of Effort

 Actual Work

 Remaining Work

 Critical Remaining Work

 Milestone

Contract HY/2009/19
Three Month Rolling Programme (21 JAN 2012 - 20 APR 2012)

Activity ID	Activity Name	Rem Dur	Start	Finish	2012															
					January				February				March				April			
					25	02	09	16	23	30	06	13	20	27	05	12	19	26	02	09
05.2.1 - D-Wall Construction																				
0521-1667	Construction of Temporary Loading Ramp at Portion VIIA	14	05-Dec-11 A	10-Feb-12	Construction of Temporary Loading Ramp at Portion VIIA															
0521-1710.05	D-wall Panel N106 (6m - 441cu.m)	10	23-Mar-12	03-Apr-12	D-wall Panel N106 (6m - 441cu.m)															
0521-1710.10	D-wall Panel N105 (4.8m - 354cu.m)	10	29-Feb-12	10-Mar-12	D-wall Panel N105 (4.8m - 354cu.m)															
0521-1710.15	D-wall Panel N104 (3.4m - 257cu.m)	10	11-Feb-12	22-Feb-12	D-wall Panel N104 (3.4m - 257cu.m)															
0521-1710.20	D-wall Panel N103 (3.4m - 256cu.m)	10	21-Jan-12	04-Feb-12	D-wall Panel N103 (3.4m - 256cu.m)															
0521-1710.30	D-wall Panel N102 (6m - 452cu.m)	0	21-Dec-11 A	05-Jan-12 A	D-wall Panel N102 (6m - 452cu.m)															
0521-1710.35	D-wall Panel N100 (6m - 456cu.m)	10	12-Mar-12	22-Mar-12	D-wall Panel N100 (6m - 456cu.m)															
0521-1710.40	D-wall Panel N99 (6m - 459cu.m)	12	31-Jan-12	13-Feb-12	D-wall Panel N99 (6m - 459cu.m)															
0521-1710.45	D-wall Panel N98 (6m - 462cu.m)	0	03-Dec-11 A	28-Dec-11 A	D-wall Panel N98 (6m - 462cu.m)															
0521-1710.55	D-wall Panel N96 (6m - 488cu.m)	6	03-Jan-12 A	31-Jan-12	D-wall Panel N96 (6m - 488cu.m)															
0521-1710.60	D-wall Panel N95 (6m - 492cu.m)	10	06-Feb-12	16-Feb-12	D-wall Panel N95 (6m - 492cu.m)															
0521-1750.05	D-wall Panel N94 (6m - 497cu.m)	10	23-Feb-12	05-Mar-12	D-wall Panel N94 (6m - 497cu.m)															
0521-1750.10	D-wall Panel N93 (6m - 501cu.m)	10	17-Mar-12	28-Mar-12	D-wall Panel N93 (6m - 501cu.m)															
0521-1750.15	D-wall Panel N92 (6m - 503cu.m)	10	06-Mar-12	16-Mar-12	D-wall Panel N92 (6m - 503cu.m)															
0521-1750.20	D-wall Panel N91 (6m - 472cu.m)	10	17-Feb-12	28-Feb-12	D-wall Panel N91 (6m - 472cu.m)															
0521-1750.25	D-wall Panel N90 (4.16m - 349cu.m)	0	01-Dec-11 A	30-Dec-11 A	D-wall Panel N90 (4.16m - 349cu.m)															
0521-1750.30	D-wall Panel N89 (4.16m - 349cu.m)	0	03-Nov-11 A	28-Dec-11 A	D-wall Panel N89 (4.16m - 349cu.m)															
0521-1750.35	D-wall Panel N88 (6m - 505cu.m)	0	19-Dec-11 A	13-Jan-12 A	D-wall Panel N88 (6m - 505cu.m)															
0521-1750.40	D-wall Panel N87 (6m - 506cu.m)	10	06-Mar-12	16-Mar-12	D-wall Panel N87 (6m - 506cu.m)															
0521-1750.45	D-wall Panel N86 (6m - 507cu.m)	10	29-Feb-12	10-Mar-12	D-wall Panel N86 (6m - 507cu.m)															
0521-1750.50	D-wall Panel N85 (6m - 507cu.m)	10	17-Feb-12	28-Feb-12	D-wall Panel N85 (6m - 507cu.m)															
0521-1750.55	D-wall Panel N84 (6m - 511cu.m)	5	11-Jan-12 A	30-Jan-12	D-wall Panel N84 (6m - 511cu.m)															
0521-1750.60	D-wall Panel N83 (6m - 517cu.m)	0	15-Dec-11 A	09-Jan-12 A	D-wall Panel N83 (6m - 517cu.m)															
0521-1790.10	D-wall Panel N74 (6m - 562cu.m)	10	12-Mar-12	22-Mar-12	D-wall Panel N74 (6m - 562cu.m)															
0521-1790.15	D-wall Panel N75 (6m - 554cu.m)	10	23-Feb-12	05-Mar-12	D-wall Panel N75 (6m - 554cu.m)															
0521-1790.20	D-wall Panel N76 (6m - 585cu.m)	10	11-Feb-12	22-Feb-12	D-wall Panel N76 (6m - 585cu.m)															
0521-1795.10	D-wall Panel N77 (6m - 570cu.m)	10	31-Jan-12	10-Feb-12	D-wall Panel N77 (6m - 570cu.m)															
0521-1795.15	D-wall Panel N78 (6m - 554cu.m)	5	09-Jan-12 A	30-Jan-12	D-wall Panel N78 (6m - 554cu.m)															
0521-1795.25	D-wall Panel N80 (6m - 537cu.m)	10	06-Feb-12	16-Feb-12	D-wall Panel N80 (6m - 537cu.m)															
0521-1795.30	D-wall Panel N81 (6m - 530cu.m)	0	24-Dec-11 A	16-Jan-12 A	D-wall Panel N81 (6m - 530cu.m)															
0521-1800	D-wall N59-N70 Pre-drilling (6 nos. remaining - 1 rig@6d/hole)	36	19-Sep-11 A	06-Mar-12	D-wall N59-N70 Pre-drilling (6 nos. remaining - 1 rig@6d/hole)															
0521-1810	D-wall N59-N70 Grouting for Existing Seawall Rubble Mound	21	07-Mar-12	30-Mar-12	D-wall N59-N70 Grouting for Existing Seawall Rubble Mound															
0521-1820	D-wall N59-N70 Guide Wall	12	31-Mar-12	17-Apr-12	D-wall N59-N70 Guide Wall															
0521-1840	D-wall N52-N58 Pre-drilling (7 nos@3d - 2 rig)	21	07-Mar-12	30-Mar-12	D-wall N52-N58 Pre-drilling (7 nos@3d - 2 rig)															
0521-1850	D-wall N52-N58 Grouting for Existing Seawall Rubble Mound	21	31-Mar-12	27-Apr-12	D-wall N52-N58 Grouting for Existing Seawall Rubble Mound															
0521-1920	D-wall Temp Grouting for Existing Seawall Rubble Mound	18	23-Feb-12	14-Mar-12	D-wall Temp Grouting for Existing Seawall Rubble Mound															
0521-1930	D-wall Temp End-wall Guide Wall	12	15-Mar-12	28-Mar-12	D-wall Temp End-wall Guide Wall															
0521-1945.15	Slurry-wall TEW2 (Set 2)	4	29-Mar-12	02-Apr-12	Slurry-wall TEW2 (Set 2)															
0521-1945.25	Slurry-wall TEW4 (Set 2)	4	03-Apr-12	10-Apr-12	Slurry-wall TEW4 (Set 2)															
0521-1945.35	Slurry-wall TEW6 (Set 2)	4	11-Apr-12	14-Apr-12	Slurry-wall TEW6 (Set 2)															
0521-1960.10	Site Establishment - Haul Road / Access Road	0	15-Nov-11 A	27-Dec-11 A	Site Establishment - Haul Road / Access Road															
0521-1960.20	Site Establishment - Additional Bentonite Plant	8	03-Jan-12 A	07-Feb-12	Site Establishment - Additional Bentonite Plant															
0521-1990	D-wall S102-S113 Guide Wall	12	10-Jan-12 A	07-Feb-12	D-wall S102-S113 Guide Wall															

- Remaining Level of Effort
- Actual Level of Effort
- Actual Work
- Remaining Work
- Critical Remaining Work
- Milestone

Contract HY/2009/19

Three Month Rolling Programme (21 JAN 2012 - 20 APR 2012)

3MRP

3MRP - Jan 2012 to Apr 2012

Page 3 of 7

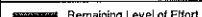
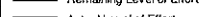
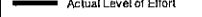
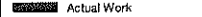

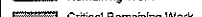
Activity ID	Activity Name	Rem Dur	Start	Finish	2012															
					January				February				March				April			
					26	02	09	16	23	30	06	13	20	27	05	12	19	26	02	09
0530-3111	Bay 9 - Sheet Piling Works	12	15-Oct-11 A	11-Feb-12	Bay 9 - Sheet Piling Works															
0530-3113	Bay 9 - Excavation	12	23-Feb-12	07-Mar-12	Bay 9 - Excavation															
0530-3114	Bay 9 - Box Culvert/Outfall Construction	48	08-Mar-12	07-May-12																
0530-3200	Storm Drainage 1500 Dia. Within Portlon X (FEHD)	60	21-Mar-12	02-Jun-12																
10 - SECTION X OF THE WORKS																				
10.1 - E/B Bridges (Bridge D, E and F)																				
10.1.1 - Marine Pier Construction																				
Prep F02 to F15																				
1011-1420	Extract Existing Dolphin Front Pile pier F9	0	26-Dec-11 A	26-Dec-11 A	Extract Existing Dolphin Front Pile pier F9															
1011-1425	Remove Existing Dolphin pier F9	0	31-Dec-11 A	03-Jan-12 A	Remove Existing Dolphin pier F9															
1011-1430	Extract Existing Dolphin Front Pile pier F10	0	29-Dec-11 A	29-Dec-11 A	Extract Existing Dolphin Front Pile pier F10															
1011-1435	Remove Existing Dolphin pier F10	0	31-Dec-11 A	03-Jan-12 A	Remove Existing Dolphin pier F10															
1011-1570.30	F7 piling platform - temporary piles 5 & 6	0	16-Dec-11 A	29-Dec-11 A	F7 piling platform - temporary piles 5 & 6															
1011-1570.40	F7 piling platform - erect steel platform modules 3 & 4	0	27-Dec-11 A	07-Jan-12 A	F7 piling platform - erect steel platform modules 3 & 4															
1011-1570.50	F7 piling platform - ICE	0	04-Jan-12 A	18-Jan-12 A	F7 piling platform - ICE															
1011-1580.20	F8 piling platform - erect steel platform modules 1 & 2	0	16-Nov-11 A	26-Dec-11 A	F8 piling platform - erect steel platform modules 1 & 2															
1011-1580.30	F8 piling platform - temporary piles 5 & 6	0	27-Dec-11 A	03-Jan-12 A	F8 piling platform - temporary piles 5 & 6															
1011-1580.40	F8 piling platform - erect steel platform modules 3 & 4	0	04-Jan-12 A	11-Jan-12 A	F8 piling platform - erect steel platform modules 3 & 4															
1011-1580.50	F8 piling platform - ICE	0	12-Jan-12 A	16-Jan-12 A	F8 piling platform - ICE															
1011-1590	Erect marine piling platform pier F9	32	10-Jan-12 A	02-Mar-12	Erect marine piling platform pier F9															
1011-1600	Erect marine piling platform pier F10	32	10-Jan-12 A	02-Mar-12	Erect marine piling platform pier F10															
1011-1610	Erect marine piling platform pier F11	18	20-Oct-11 A	15-Feb-12	Erect marine piling platform pier F11															
1011-1620	Erect marine piling platform pier F12	18	26-Oct-11 A	14-Feb-12	Erect marine piling platform pier F12															
1011-1630	Erect marine piling platform pier F13	18	01-Nov-11 A	20-Apr-12	Erect marine piling platform pier F13															
1011-1640	Erect marine piling platform pier F14	18	08-Nov-11 A	09-May-12	Erect marine piling platform pier F14															
1011-1670	Pre-drill F7 raking dolphin piles (2 nos.)	3	03-Dec-11 A	27-Jan-12	Pre-drill F7 raking dolphin piles (2 nos.)															
1011-1680	Pre-drill F8 raking dolphin piles (2 nos.)	5	05-Jan-12 A	02-Feb-12	Pre-drill F8 raking dolphin piles (2 nos.)															
1011-1690	Pre-drill F9 raking dolphin piles (2 nos.)	10	02-Mar-12	14-Mar-12	Pre-drill F9 raking dolphin piles (2 nos.)															
1011-1700	Pre-drill F10 raking dolphin piles (2 nos.)	10	14-Mar-12	26-Mar-12	Pre-drill F10 raking dolphin piles (2 nos.)															
1011-1710	Pre-drill F11 raking dolphin piles (2 nos.)	10	16-Feb-12	27-Feb-12	Pre-drill F11 raking dolphin piles (2 nos.)															
1011-1720	Pre-drill F12 raking dolphin piles (2 nos.)	10	28-Feb-12	09-Mar-12	Pre-drill F12 raking dolphin piles (2 nos.)															
1011-1760.20	Pier F3 Marine Bore Pile - F3-4	0	24-Dec-11 A	17-Jan-12 A	Pier F3 Marine Bore Pile - F3-4															
1011-1760.30	Pier F3 Marine Bore Pile - F3-7	12	21-Jan-12	07-Feb-12	Pier F3 Marine Bore Pile - F3-7															
1011-1760.40	Pier F3 Marine Bore Pile - F3-3	12	08-Feb-12	21-Feb-12	Pier F3 Marine Bore Pile - F3-3															
1011-1760.50	Pier F3 Marine Bore Pile - F3-6	12	22-Feb-12	06-Mar-12	Pier F3 Marine Bore Pile - F3-6															
1011-1760.60	Pier F3 Marine Bore Pile - F3-2	12	07-Mar-12	20-Mar-12	Pier F3 Marine Bore Pile - F3-2															
1011-1760.70	Pier F3 Marine Bore Pile - F3-5	12	21-Mar-12	03-Apr-12	Pier F3 Marine Bore Pile - F3-5															
1011-1760.80	Pier F3 Marine Bore Pile - F3-1	12	05-Apr-12	20-Apr-12	Pier F3 Marine Bore Pile - F3-1															
1011-1790	Pier F6 Dolphin Pile (team 4)	72	16-Mar-12	13-Jun-12	Pier F6 Dolphin Pile (team 4)															
1011-1800.10	Pier F6 Marine Bore Pile - F6-2	10	15-Dec-11 A	04-Feb-12	Pier F6 Marine Bore Pile - F6-2															
1011-1800.20	Pier F6 Marine Bore Pile - F6-3	11	07-Jan-12 A	17-Feb-12	Pier F6 Marine Bore Pile - F6-3															
1011-1800.30	Pier F6 Marine Bore Pile - F6-1	12	17-Feb-12	02-Mar-12	Pier F6 Marine Bore Pile - F6-1															
1011-1800.40	Pier F6 Marine Bore Pile - F6-4	12	02-Mar-12	16-Mar-12	Pier F6 Marine Bore Pile - F6-4															
1011-1802	Pier F9 Dolphin Pile (team 4)	72	16-Mar-12	13-Jun-12	Pier F9 Dolphin Pile (team 4)															

Remaining Level of Effort
 Actual Level of Effort
 Actual Work
 Remaining Work
 Critical Remaining Work
 Milestone

Contract HY/2009/19
Three Month Rolling Programme (21 JAN 2012 - 20 APR 2012)

3MRP
 3MRP - Jan 2012 to Apr 2012
 Page 5 of 7

Activity ID	Activity Name	Rem Dur	Start	Finish	2012																											
					January							February							March							April						
					26	02	09	16	23	30	06	13	20	27	05	12	19	26	02	09	16	23	30	06	13	20	27	05	12	19	26	
1012-1015	Pre-drilling for Piling (D08 to D12) at III (28 no.) (4set)	16	03-Jan-12 A	13-Feb-12	Pre-drilling for Piling (D08 to D12) at III (28 no.) (4set)																											
1012-1020	Portion III Land Pile G.I. Prelim Report / Founding Level	6	13-Feb-12	20-Feb-12	Portion III Land Pile G.I. Prelim Report / Founding Level																											
1012-1025	Portion III Land Pile G.I. Final Report / Founding Level	24	20-Feb-12	19-Mar-12	Portion III Land Pile G.I. Final Report / Founding Level																											
1012-1030.10	Pier D08 Bored Pile D8-1	12	13-Feb-12	27-Feb-12	Pier D08 Bored Pile D8-1																											
1012-1030.20	Pier D08 Bored Pile D8-6	12	27-Feb-12	12-Mar-12	Pier D08 Bored Pile D8-6																											
1012-1030.30	Pier D08 Bored Pile D8-2	12	12-Mar-12	26-Mar-12	Pier D08 Bored Pile D8-2																											
1012-1030.40	Pier D08 Bored Pile D8-5	12	26-Mar-12	12-Apr-12	Pier D08 Bored Pile D8-5																											
1012-1030.50	Pier D08 Bored Pile D8-3	12	12-Apr-12	26-Apr-12	Pier D08 Bored Pile D8-3																											
1012-1040.10	Pier D09 Bored Pile D9-1	12	13-Feb-12	27-Feb-12	Pier D09 Bored Pile D9-1																											
1012-1040.20	Pier D09 Bored Pile D9-6	12	27-Feb-12	12-Mar-12	Pier D09 Bored Pile D9-6																											
1012-1040.30	Pier D09 Bored Pile D9-2	12	12-Mar-12	26-Mar-12	Pier D09 Bored Pile D9-2																											
1012-1040.40	Pier D09 Bored Pile D9-5	12	26-Mar-12	12-Apr-12	Pier D09 Bored Pile D9-5																											
1012-1040.50	Pier D09 Bored Pile D9-3	12	12-Apr-12	26-Apr-12	Pier D09 Bored Pile D9-3																											
1012-1050.10	Pier D10 Bored Pile D10-1	12	20-Feb-12	05-Mar-12	Pier D10 Bored Pile D10-1																											
1012-1050.20	Pier D10 Bored Pile D10-6	12	05-Mar-12	19-Mar-12	Pier D10 Bored Pile D10-6																											
1012-1050.30	Pier D10 Bored Pile D10-2	12	19-Mar-12	02-Apr-12	Pier D10 Bored Pile D10-2																											
1012-1050.40	Pier D10 Bored Pile D10-5	12	02-Apr-12	19-Apr-12	Pier D10 Bored Pile D10-5																											
1012-1060.10	Pier D11 Bored Pile D11-1	12	05-Mar-12	19-Mar-12	Pier D11 Bored Pile D11-1																											
1012-1060.20	Pier D11 Bored Pile D11-6	12	19-Mar-12	02-Apr-12	Pier D11 Bored Pile D11-6																											
1012-1060.30	Pier D11 Bored Pile D11-2	12	02-Apr-12	19-Apr-12	Pier D11 Bored Pile D11-2																											
Pier D05 to D07																																
1012-1260	Pre-drilling for 18 nos Piling at VIIB (2set)	11	08-Aug-11 A	06-Feb-12	Pre-drilling for 18 nos Piling at VIIB (2set)																											
1012-1265	Portion VIIB Land Pile G.I. Final Report / Founding Level	15	03-Oct-11 A	23-Feb-12	Portion VIIB Land Pile G.I. Final Report / Founding Level																											
1012-1270	Pier D07 Bored Piles (6 piles)	108	23-Feb-12	05-Jul-12	Pier D07 Bored Piles (6 piles)																											
1012-1280.50	Pier D06 Bored Pile D06-4	8	03-Jan-12 A	02-Feb-12	Pier D06 Bored Pile D06-4																											
1012-1280.60	Pier D06 Bored Pile D06-3	0	21-Dec-11 A	18-Jan-12 A	Pier D06 Bored Pile D06-3																											
1012-1290.20	Pier D05 Bored Pile D05-1	13	02-Dec-11 A	19-Apr-12	Pier D05 Bored Pile D05-1																											
10.1.3 - E/B Bridge Construction																																
Bridge D3																																
1013-1000	Design & Procurement of Launching Girder	75	21-Jan-12	24-Apr-12	Design & Procurement of Launching Girder																											
14 - SECTION 14 OF THE WORKS																																
14.1 - Soft Landscape																																
1410-1000	Transplant. of ex. Trees to Nursery & upkeep	1515	21-Jan-12	09-Feb-17	Transplant. of ex. Trees to Nursery & upkeep																											

-  Remaining Level of Effort
-  Actual Level of Effort
-  Actual Work
-  Remaining Work
-  Critical Remaining Work
-  Milestone

Contract HY/2009/19
Three Month Rolling Programme (21 JAN 2012 - 20 APR 2012)

3MRP
3MRP - Jan 2012 to Apr 2012
Page 7 of 7

Activity ID	Activity Name	Rem Dur	Start	Finish	2012																	
					March					April					May				June			
					20	27	05	12	19	26	02	09	16	23	30	07	14	21	28	04	11	18
3MRP - MAR 2012 to JUN 2012																						
01 - CONTRACT DATES																						
01.1 - Conditions																						
0110-1100	PMI for Section 1 of the Works	0		21-Mar-12																◆ PMI for Section 1 of the Works		
01.5 - Period of Site Possession for each Portion																						
0150-1000	Site possession Period Portion VI	2030	20-Jan-11 A	10-Oct-17																		
0150-1100	Site Possession Period Portion VIIA	2030	04-Aug-11 A	10-Oct-17																		
0150-1200	Site Possession Period Portion VIIB	732	04-Aug-11 A	22-Mar-14																		
0150-1300	Site Possession Period Portion VIIC	1169	04-Aug-11 A	02-Jun-15																		
0150-1400	Site Possession Period Portion VIID	732	04-Aug-11 A	22-Mar-14																		
0150-1500	Site Possession Period Portion XI	622	05-Oct-11 A	03-Dec-13																		
0150-1700	Site Possession Period Portion IB	732	10-Nov-11 A	22-Mar-14																		
0150-1800	Site Possession Period Portion IC	1169	10-Nov-11 A	02-Jun-15																		
0150-1900	Site Possession Period Portion ID	732	10-Nov-11 A	22-Mar-14																		
0150-2000	Site Possession Period Portion X	2030	10-Nov-11 A	10-Oct-17																		
0150-2100	Site Possession Period Portion III	2030	31-Dec-11 A	10-Oct-17																		
0150-2200	Site Possession Period Portion VA	2030	31-Dec-11 A	10-Oct-17																		
0150-2300	Site Possession Period Portion VB	976	31-Dec-11 A	21-Nov-14																		
0150-2400	Site Possession Period Portion VC	2030	31-Dec-11 A	10-Oct-17																		
0150-2500	Site Possession Period Portion VD	1233	31-Dec-11 A	05-Aug-15																		
02 - PRE-CONSTRUCTION WORKS																						
02.2 - Contractor's Submission																						
0220-1250	Concrete Ready Mix/Design Mix - Concrete Plant Trials & Approval	8	04-Aug-11 A	28-Mar-12																Concrete Ready Mix/Design Mix - Concrete Plant Trials & Approval		
0220-1260	Drainage Pipes & Materials - Submission	7	15-Sep-11 A	27-Mar-12																Drainage Pipes & Materials - Submission		
0220-1270	Drainage Pipes & Materials - ER Review/Comment	14	28-Mar-12	10-Apr-12																Drainage Pipes & Materials - ER Review/Comment		
0220-1280	Drainage Pipes & Materials - Resubmission	7	11-Apr-12	17-Apr-12																Drainage Pipes & Materials - Resubmission		
0220-1290	Drainage Pipes & Materials - ER Approval	14	18-Apr-12	01-May-12																Drainage Pipes & Materials - ER Approval		
0220-1300	Drainage Pipes & Materials - Procurement & Delivery	14	25-Apr-12	08-May-12																Drainage Pipes & Materials - Procurement & Delivery		
0220-1360	Tunnel Structures Materials - Submission	28	21-Mar-12	17-Apr-12																Tunnel Structures Materials - Submission		
0220-1370	Tunnel Structures Materials - ER Review/Comment	28	18-Apr-12	15-May-12																Tunnel Structures Materials - ER Review/Comment		
0220-1380	Tunnel Structures Materials - Resubmission	14	16-May-12	29-May-12																Tunnel Structures Materials - Resubmission		
0220-1390	Tunnel Structures Materials - ER Approval	21	30-May-12	19-Jun-12																Tunnel Structures Materials - ER Approval		
0220-1460	Bridge Bearing - Submission	15	10-Oct-11 A	04-Apr-12																Bridge Bearing - Submission		
0220-1470	Bridge Bearing - ER Review/Comment	28	05-Apr-12	02-May-12																Bridge Bearing - ER Review/Comment		
0220-1480	Bridge Bearing - Resubmission	14	03-May-12	16-May-12																Bridge Bearing - Resubmission		
0220-1490	Bridge Bearing - ER Approval	28	17-May-12	13-Jun-12																Bridge Bearing - ER Approval		
02.3 - Method Statement / Shop Drawings																						
0230-1131	MS Marine Piling - Submission (low headroom)	28	21-Mar-12	17-Apr-12																MS Marine Piling - Submission (low headroom)		
0230-1132	MS Marine Piling - ER Review & Comment (low headroom)	28	18-Apr-12	15-May-12																MS Marine Piling - ER Review & Comment (low headroom)		
0230-1133	MS Marine Piling - Resubmission (low headroom)	28	16-May-12	12-Jun-12																MS Marine Piling - Resubmission (low headroom)		
0230-1260	MS Cut & Cover Tunnel - Submission	28	21-Mar-12	17-Apr-12																MS Cut & Cover Tunnel - Submission		
0230-1270	MS Cut & Cover Tunnel - ER Review & Comment	28	18-Apr-12	15-May-12																MS Cut & Cover Tunnel - ER Review & Comment		
0230-1280	MS Cut & Cover Tunnel - Resubmission	28	16-May-12	12-Jun-12																MS Cut & Cover Tunnel - Resubmission		
0230-1340	MS Pre-cast Segment Bridge - Submission	28	01-Apr-12	28-Apr-12																MS Pre-cast Segment Bridge - Submission		

- Remaining Level of Effort
- Actual Level of Effort
- Actual Work
- Remaining Work
- Critical Remaining Work
- ◆ Milestone

Contract HY/2009/19

Three Month Rolling Programme (21 MAR 2012 to 20 JUN 2012)

3MRP

3MRP - MAR 2012 to JUN 2012

Page 1 of 7

Activity ID	Activity Name	Rem Dur	Start	Finish	2012																	
					March					April					May				June			
					20	27	05	12	19	26	02	09	16	23	30	07	14	21	28	04	11	18
0230-1350	MS Pre-cast Segment Bridge - ER Review & Comment	28	29-Apr-12	26-May-12																		
0230-1360	MS Pre-cast Segment Bridge - Resubmission	28	27-May-12	23-Jun-12																		
0230-1460	MS Stressing/Destressing Tendons - Submission	28	21-Mar-12	17-Apr-12																		
0230-1470	MS Stressing/Destressing Tendons - ER Review & Comment	28	18-Apr-12	15-May-12																		
0230-1480	MS Stressing/Destressing Tendons - Resubmission	28	16-May-12	12-Jun-12																		
0230-1540	MS Precasting of Bridge Segment & Beam - Submission	18	14-Dec-11 A	07-Apr-12																		
0230-1550	MS Precasting of Bridge Segment & Beam - ER Review & Comment	28	08-Apr-12	05-May-12																		
0230-1560	MS Precasting of Bridge Segment & Beam - Resubmission	36	06-May-12	10-Jun-12																		
0230-1570	MS Precasting of Bridge Segment & Beam - ER Approval	28	11-Jun-12	08-Jul-12																		
0230-1700	MS Temporary Bridge TA - Submission	28	03-Jun-12	30-Jun-12																		
02.4 - Contractor's Design and Build Items																						
0240-1010	Temp Bridge "TA" Design - Prep & Submit	60	16-Dec-11 A	19-May-12																		
0240-1020	Temp Bridge "TA" Design - ER review and comment	28	20-May-12	16-Jun-12																		
0240-1041	Temp Bridge "TD" Design - Prep & Submit	120	14-Apr-12	11-Aug-12																		
0240-1090	Int. Noise Enclosure Design - Public Consultation	90	29-Jul-11 A	18-Jun-12																		
0240-1095	Int. Noise Enclosure Design - ACABAS/ER Consultation/Submission	81	16-Dec-11 A	09-Jun-12																		
0240-1100	Int. Noise Enclosure Design - ER review & comment	28	10-Jun-12	07-Jul-12																		
0240-1120	Noise Barrier Design - Public Consultation	90	29-Jul-11 A	18-Jun-12																		
0240-1122	Noise Barrier Design - ACABAS/ER Consultation/Submission	81	16-Dec-11 A	09-Jun-12																		
0240-1124	Noise Barrier Design - ER review & comment	28	10-Jun-12	07-Jul-12																		
0240-1130	Perm. Noise Enclosure Design - Public Consultation	166	14-Feb-12 A	02-Sep-12																		
02.5 - Bridge Segment/Beam Off-site Precasting																						
0250-1000	Propose, approve and set-up Factory for Pre-cast Unit	61	14-Dec-11 A	20-May-12																		
0250-1100	Geometric Design of the Bridge Segments/Beams	26	14-Dec-11 A	15-Apr-12																		
0250-1200	Bridge Segment/Beam Mould Preparation	24	15-Apr-12	09-May-12																		
0250-1300	Trial Casting for Bridge Segment/Beam	18	09-May-12	27-May-12																		
0250-1400	Preparation for Bridge Segment /Beam Production	30	27-May-12	26-Jun-12																		
03 - PRELIMINARY WORKS																						
03.1 - Site Establishment																						
0310-1290	Fabrication of Special Hoarding	64	24-Oct-11 A	07-Jun-12																		
0310-1300	Hoarding at Portion VA & VB	40	07-Jun-12	26-Jul-12*																		
0310-1400	Move in Surcharge to Portion III & VD	6	21-Mar-12	27-Mar-12																		
0310-1500	Surcharge kept on Site	90	28-Mar-12	25-Jun-12																		
03.2 - Geotechnical Instrumentation & Monitoring Works																						
0320-1100	Geotechnical Instrumentation Portion X	60	21-Mar-12	02-Jun-12																		
03.3 - Interface Works																						
0330-1100	Works at FEHD Permanent Depot (Stage 1)	36	21-Mar-12	05-May-12																		
0330-1110	Submit to FEHD/ER Relocation Sequence & Programme	6	21-Mar-12	27-Mar-12																		
0330-1120	Relocate FEHD to Permanent Depot at Portions IA & X	12	07-May-12	19-May-12																		
04 - SECTION 1 OF THE WORKS (Subject to Excision)																						
04.1 - Drainage & Sewerage																						
0410-0980	Ground investigation + CAR & RAP approval	2	19-Jul-11 A	23-Mar-12																		
0410-0990	Engineer Instruction to excision of the works	0		23-Mar-12																		
0410-1010	Confirmatory Investigation/Sample/Tests/Decontamination	60	23-Mar-12	06-Jun-12																		

- Remaining Level of Effort
- Actual Level of Effort
- Actual Work
- Remaining Work
- Critical Remaining Work
- ◆ Milestone

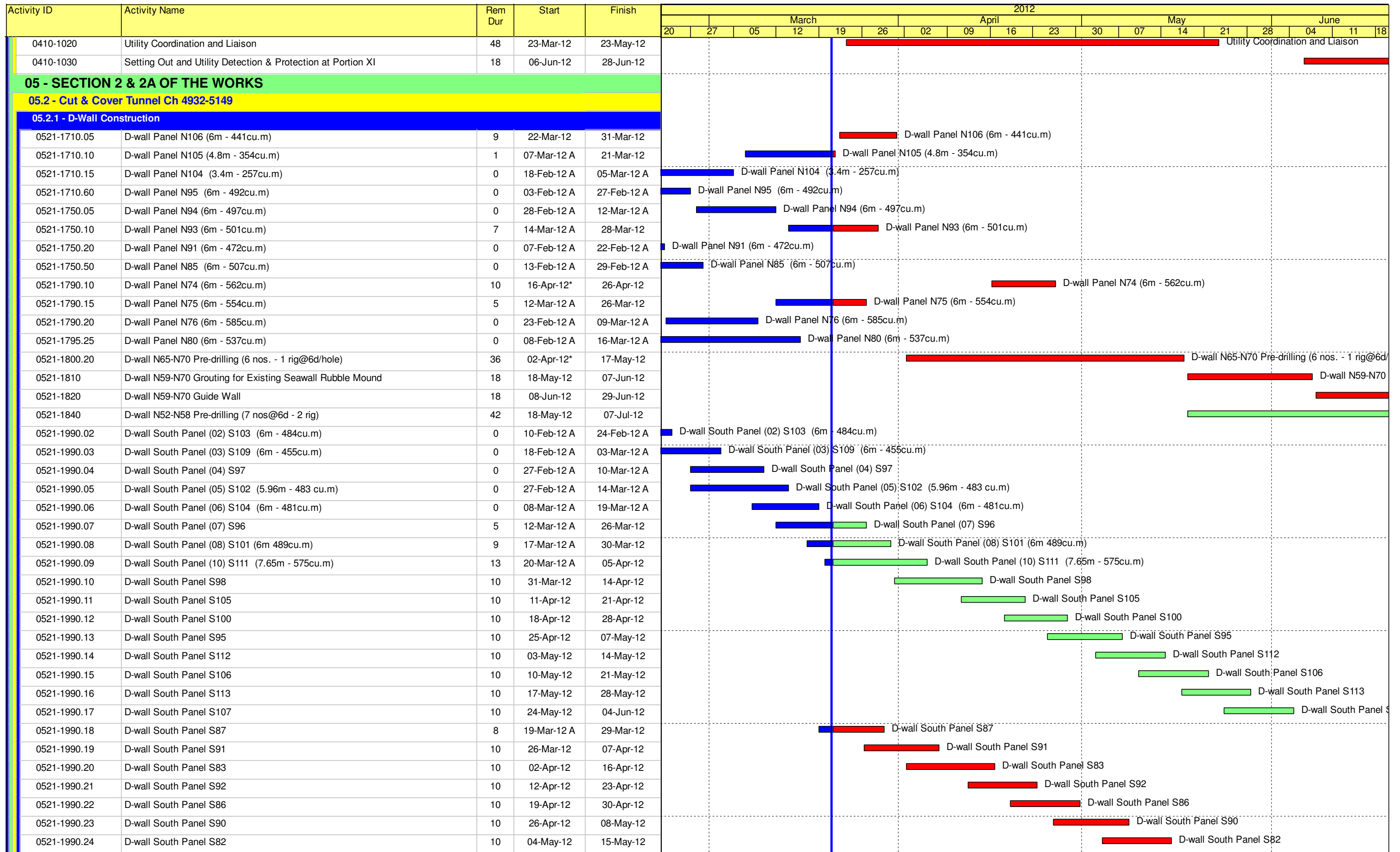
Contract HY/2009/19

Three Month Rolling Programme (21 MAR 2012 to 20 JUN 2012)

3MRP

3MRP - MAR 2012 to JUN 2012

Page 2 of 7



- Remaining Level of Effort
- Actual Level of Effort
- Actual Work
- Remaining Work
- Critical Remaining Work
- ◆ Milestone

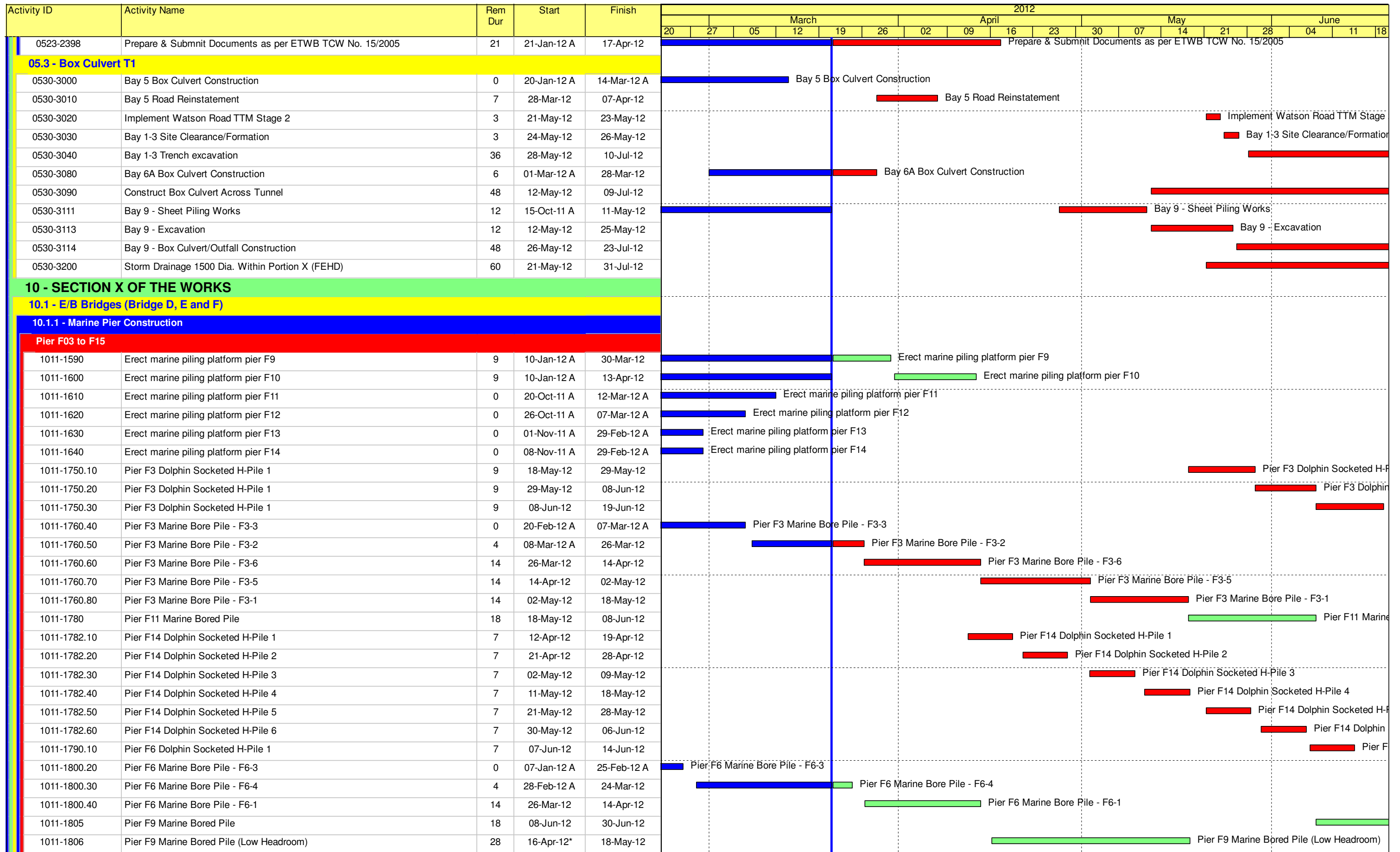
Contract HY/2009/19

Three Month Rolling Programme (21 MAR 2012 to 20 JUN 2012)

3MRP

3MRP - MAR 2012 to JUN 2012

Page 3 of 7



- █ Remaining Level of Effort
- █ Actual Level of Effort
- █ Actual Work
- █ Remaining Work
- █ Critical Remaining Work
- ◆ Milestone

Contract HY/2009/19

Three Month Rolling Programme (21 MAR 2012 to 20 JUN 2012)

3MRP

3MRP - MAR 2012 to JUN 2012

Activity ID	Activity Name	Rem Dur	Start	Finish	2012																	
					March					April					May				June			
					20	27	05	12	19	26	02	09	16	23	30	07	14	21	28	04	11	18
Abutment D12																						
1012-1071	Abutment E/B Bridge Bored Pile D12-1	0	21-Feb-12 A	17-Mar-12 A	Abutment E/B Bridge Bored Pile D12-1																	
1012-1072	Abutment E/B Bridge Bored Pile D12-8	9	17-Mar-12 A	30-Mar-12	Abutment E/B Bridge Bored Pile D12-8																	
1012-1073	Abutment E/B Bridge Bored Pile D12-3	12	31-Mar-12	17-Apr-12	Abutment E/B Bridge Bored Pile D12-3																	
1012-1074	Abutment E/B Bridge Bored Pile D12-4	12	18-Apr-12	02-May-12	Abutment E/B Bridge Bored Pile D12-4																	
1012-1090	Abutment D12 E/B Bridge Bored Pile Testing	18	03-May-12	23-May-12	Abutment D12 E/B Bridge Bored Pile																	
1012-1220	Abutment D12 construction (E/B Bridge)	42	24-May-12	13-Jul-12																		
Pier D08 to D11																						
1012-1015	Pre-drilling for Pilings (D08 to D12) at III (28 no.) (4set)	0	03-Jan-12 A	07-Mar-12 A	Pre-drilling for Pilings (D08 to D12) at III (28 no.) (4set)																	
1012-1020	Portion III Land Pile G.I. Prelim Report / Founding Level	6	21-Mar-12	27-Mar-12	Portion III Land Pile G.I. Prelim Report / Founding Level																	
1012-1025	Portion III Land Pile G.I. Final Report / Founding Level	24	28-Mar-12	27-Apr-12	Portion III Land Pile G.I. Final Report / Founding Level																	
1012-1040.20	Pier D09 Bored Pile D9-2	0	20-Feb-12 A	02-Mar-12 A	Pier D09 Bored Pile D9-2																	
1012-1040.30	Pier D09 Bored Pile D9-1	0	03-Mar-12 A	17-Mar-12 A	Pier D09 Bored Pile D9-1																	
1012-1040.40	Pier D09 Bored Pile D9-4	10	19-Mar-12 A	31-Mar-12	Pier D09 Bored Pile D9-4																	
1012-1040.50	Pier D09 Bored Pile D9-3	12	02-Apr-12	18-Apr-12	Pier D09 Bored Pile D9-3																	
1012-1040.60	Pier D09 Bored Pile D9-6	12	19-Apr-12	03-May-12	Pier D09 Bored Pile D9-6																	
1012-1050.10	Pier D10 Bored Pile D10-2	0	29-Feb-12 A	12-Mar-12 A	Pier D10 Bored Pile D10-2																	
1012-1050.20	Pier D10 Bored Pile D10-5	3	11-Mar-12 A	23-Mar-12	Pier D10 Bored Pile D10-5																	
1012-1050.30	Pier D10 Bored Pile D10-2	12	24-Mar-12	10-Apr-12	Pier D10 Bored Pile D10-2																	
1012-1050.40	Pier D10 Bored Pile D10-5	12	11-Apr-12	24-Apr-12	Pier D10 Bored Pile D10-5																	
1012-1050.50	Pier D10 Bored Pile D10-3	12	25-Apr-12	09-May-12	Pier D10 Bored Pile D10-3																	
1012-1050.60	Pier D10 Bored Pile D10-4	12	10-May-12	23-May-12	Pier D10 Bored Pile D10-4																	
1012-1060.10	Pier D11 Bored Pile D11-5	0	13-Feb-12 A	27-Feb-12 A	Pier D11 Bored Pile D11-5																	
1012-1060.20	Pier D11 Bored Pile D11-2	6	28-Feb-12 A	27-Mar-12	Pier D11 Bored Pile D11-2																	
1012-1060.30	Pier D11 Bored Pile D11-2	12	28-Mar-12	13-Apr-12	Pier D11 Bored Pile D11-2																	
1012-1060.40	Pier D11 Bored Pile D11-1	12	14-Apr-12	27-Apr-12	Pier D11 Bored Pile D11-1																	
1012-1060.50	Pier D11 Bored Pile D11-3	12	28-Apr-12	12-May-12	Pier D11 Bored Pile D11-3																	
1012-1060.60	Pier D11 Bored Pile D11-4	12	14-May-12	26-May-12	Pier D11 Bored Pile D11-4																	
1012-1130	Pier D09 Construct Pile Cap	18	18-May-12	07-Jun-12	Pier D09 Constr																	
1012-1140	Pier D09 Construct Pier/Column	12	08-Jun-12	21-Jun-12																		
1012-1190	Pier D11 Construct Pile Cap	18	11-Jun-12	03-Jul-12																		
Pier D05 to D07																						
1012-1270	Pier D07 Bored Piles (6 piles)	108	04-May-12	08-Sep-12																		
1012-1290.20	Pier D05 Bored Pile D05-1	13	02-Dec-11 A	07-Jun-12	Pier D05 Bored																	
1012-1300	Pier D05/D06/D07 Bored Piles Testing	18	07-Jun-12	29-Jun-12																		
10.1.3 - E/B Bridge Construction																						
Bridge D3																						
1013-1000	Design & Procurement of Launching Girder	68	21-Jan-12 A	12-Jun-12	Design &																	
1013-1010	Fabrication & Delivery of Launching Girder	75	12-Jun-12	10-Sep-12																		

- Remaining Level of Effort
- Actual Level of Effort
- Actual Work
- Remaining Work
- Critical Remaining Work
- ◆ Milestone

Contract HY/2009/19

Three Month Rolling Programme (21 MAR 2012 to 20 JUN 2012)

3MRP

3MRP - MAR 2012 to JUN 2012

Page 7 of 7